



(Sponsored by: Brilliant Grammar School Educational Society)

(Approved by AICTE, New Delhi, Affiliated to JNTU-Hyderabad)

Abdullapur(V), Abdullapurmet (M), R.R. Dist – 501505, Telangana, India

Website: www.b-iet.ac.in, e-mail: principal@b-iet.ac.in Contact No.: +919652929786

7.1.5 Green campus initiatives:

Restricted entry of automobiles refers to limiting or controlling the access of vehicles into certain areas or zones for various reasons, primarily to reduce congestion, pollution, enhance safety, and improve the overall quality of life in urban spaces. This approach is often adopted in densely populated cities, historical districts, or environmentally sensitive areas.

1. Restricted entry of Automobiles:



Restricts entry of automobiles.

1 
 PRINCIPAL
 BRILLIANT INSTITUTE OF
 ENGINEERING AND TECHNOLOGY
 V&Mdl: Abdullapurmet, R.R.Dist. 501505

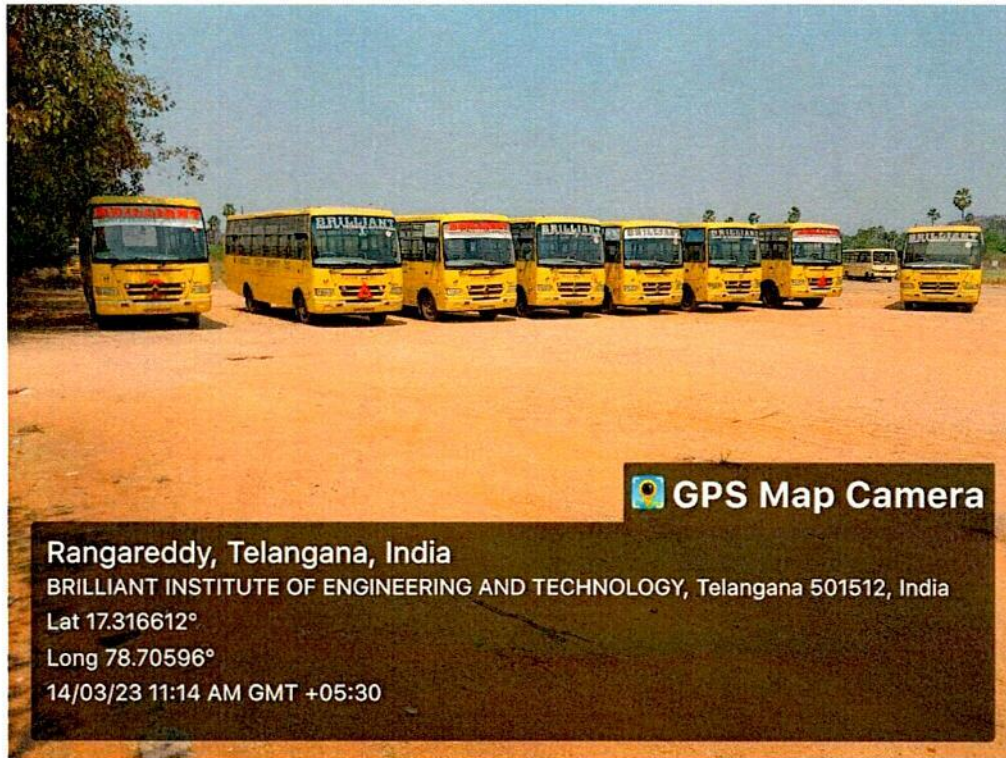


(Sponsored by: Brilliant Grammar School Educational Society)

(Approved by AICTE, New Delhi, Affiliated to JNTU-Hyderabad)

Abdullapur(V), Abdullapurmet (M), R.R. Dist – 501505, Telangana, India

Website: www.b-iet.ac.in, e-mail: principal@b-iet.ac.in Contact No.: +919652929786



Bus parking inside of the main gate

Zero Emissions: No fuel is required to operate a bicycle, making it a zero-emission mode of transportation.

Less Noise Pollution: Bicycles contribute to quieter cities compared to cars or motorcycles, reducing noise pollution levels in urban areas.

Health Benefits:

Physical Fitness: Regular cycling builds cardio vascular health, strengthens muscles, and improves joint flexibility.

Mental Health: Cycling helps to relieve stress, anxiety, and depression, contributing to better mental well-being.

Sustainable Weight Loss: Cycling helps in burning calories and maintaining a healthy body weight.

PRINCIPAL

2 BRILLIANT INSTITUTE OF
 ENGINEERING AND TECHNOLOGY
 Vill & Md: Abdullapurmet, R.R. Dist-501505.



(Sponsored by: Brilliant Grammar School Educational Society)

(Approved by AICTE, New Delhi, Affiliated to JNTU-Hyderabad)

Abdullapur(V), Abdullapurmet (M), R.R. Dist – 501505, Telangana, India

Website: www.b-iet.ac.in, e-mail: principal@b-iet.ac.in Contact No.: +919652929786

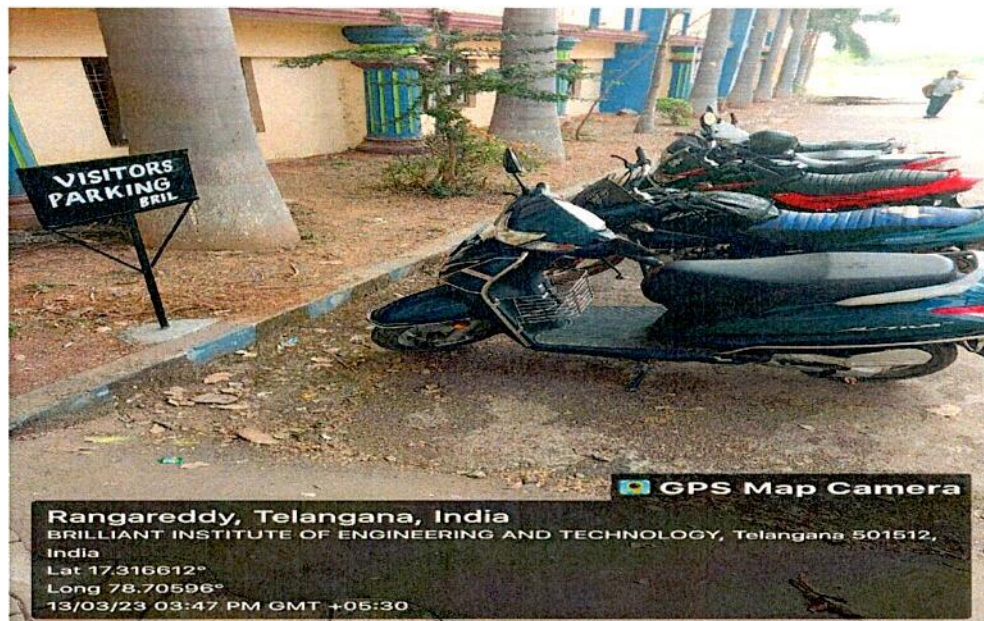
Economic Benefits:

Reduced Costs for Individuals: Bicycles are more affordable to own and maintain than cars, making them a cost-effective transportation alternative.

Reduced Healthcare Costs: As cycling promotes better health, it can lower healthcare costs by preventing diseases related to physical inactivity and poor air quality.

Flexibility and Speed: Cycling can often be faster than driving for short distances due to less congestion and better ability to manoeuvre through traffic.

Easy Parking: Unlike cars, bicycles can be parked almost anywhere, reducing the need for expensive and time-consuming parking.



Two wheeler parking inside of the main gate

[Handwritten Signature]
PRINCIPAL
BRILLIANT INSTITUTE OF
ENGINEERING AND TECHNOLOGY
Vill & Md: Abdullapurmet, R.R. Dist-501505.



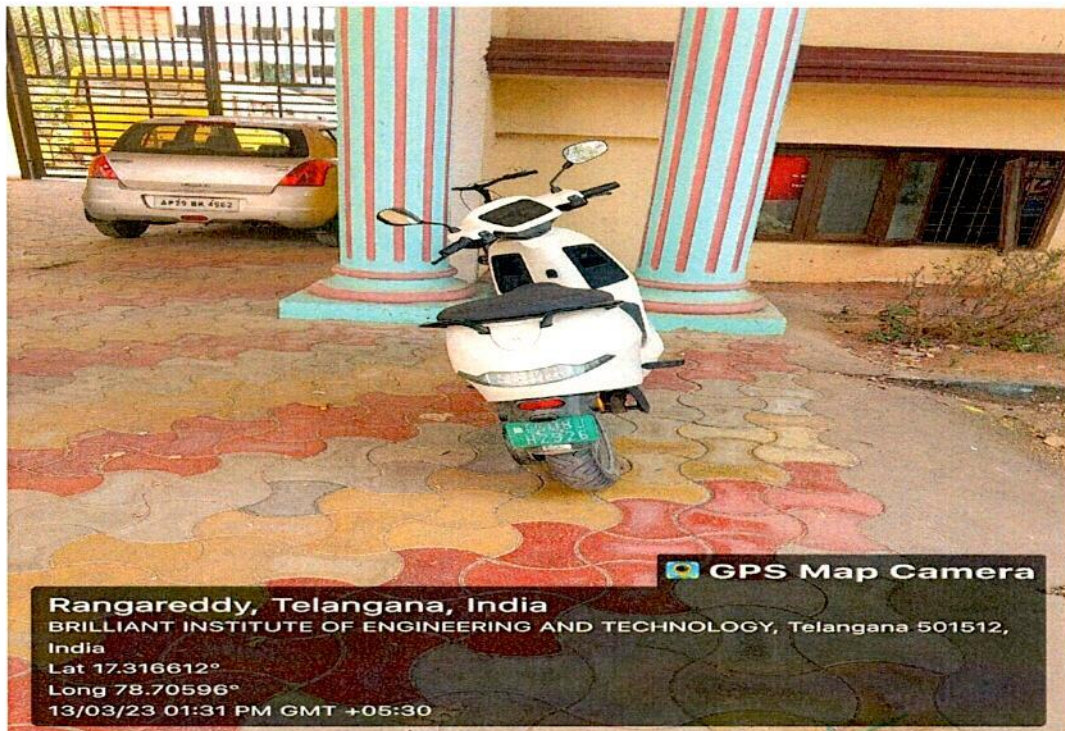
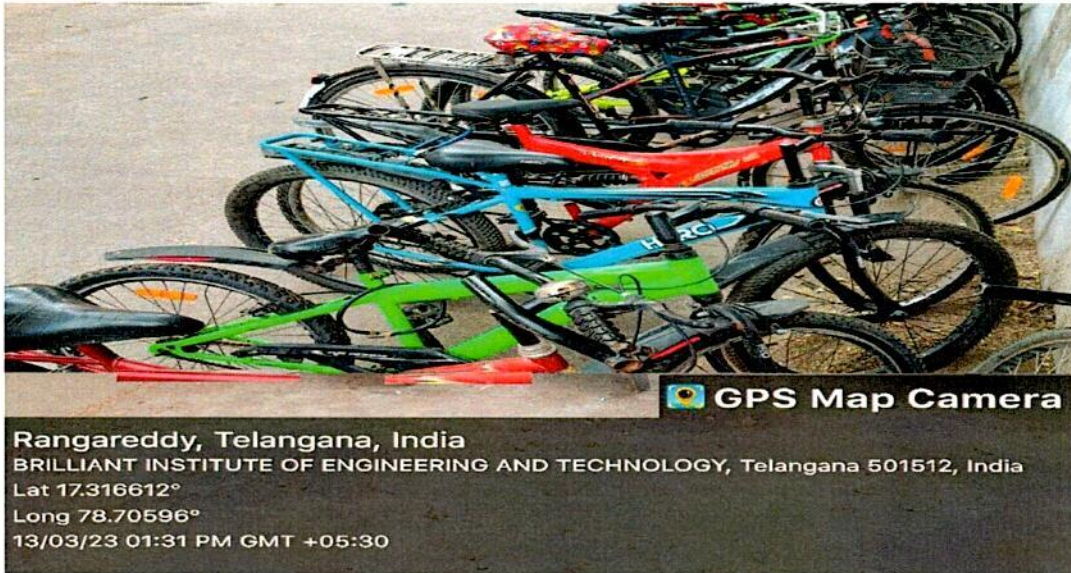
(Sponsored by: Brilliant Grammar School Educational Society)

(Approved by AICTE, New Delhi, Affiliated to JNTU-Hyderabad)

Abdullapur(V), Abdullapurmet (M), R.R. Dist – 501505, Telangana, India

Website: www.b-iet.ac.in, e-mail: principal@b-iet.ac.in Contact No.: +919652929786

2. Use of Bicycles and electric vehicles at campus premises:



4

PRINCIPAL
BRILLIANT INSTITUTE OF
ENGINEERING AND TECHNOLOGY
 VII & Md: Abdullapurmet, R.R. Dist-501505.



(Sponsored by: Brilliant Grammar School Educational Society)

(Approved by AICTE, New Delhi, Affiliated to JNTU-Hyderabad)

Abdullapur(V), Abdullapurmet (M), R.R. Dist – 501505, Telangana, India

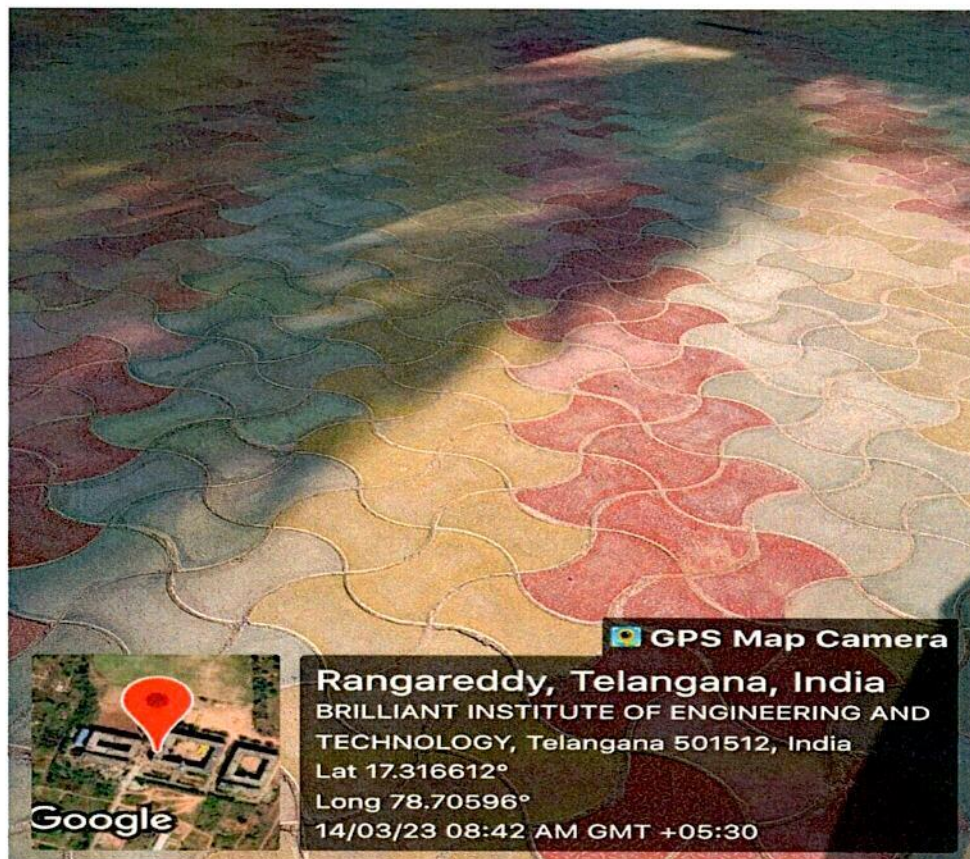
Website: www.b-iet.ac.in, e-mail: principal@b-iet.ac.in Contact No.: +919652929786

3. Pedestrian friendly pathways

Pedestrian-friendly pathways are dedicated routes designed to prioritize the safety, comfort, and convenience of pedestrians in urban and rural environments. These pathways help to create walkable, accessible, and attractive spaces that encourage people to walk instead of relying on cars.

Spacious Pathways: Pedestrian pathways should be wide enough to accommodate a variety of pedestrians, including those walking with strollers, wheelchairs, or mobility devices. Ideally, pathways should be at least 4 to 6 feet wide in most urban settings to allow safe and easy movement.

Non-Slip Surfaces: Especially in areas prone to rain or snow, slip-resistant materials (such as textured paving or rubber) should be used to ensure safety in all weather conditions



Pedestrian friendly path ways

5

[Signature]
PRINCIPAL
BRILLIANT INSTITUTE OF
ENGINEERING AND TECHNOLOGY
Vill & Mdt: Abdullapurmet, R.R. Dist-501505.



(Sponsored by: Brilliant Grammar School Educational Society)

(Approved by AICTE, New Delhi, Affiliated to JNTU-Hyderabad)

Abdullapur(V), Abdullapurmet (M), R.R. Dist – 501505, Telangana, India

Website: www.b-iet.ac.in, e-mail: principal@b-iet.ac.in Contact No.: +919652929786

4. Ban of Plastic



Pledge on Ban of usage of Plastic inside the Campus

Reducing plastic use can minimize pollution, decrease land fill waste, and protect wildlife. Colleges can significantly reduce their carbon footprint by cutting down on single-use plastics. A ban can serve as a powerful educational tool, raising awareness among students about sustainability and encouraging environmentally friendly habits.

6 PRINCIPAL
BRILLIANT INSTITUTE OF
ENGINEERING AND TECHNOLOGY
Vill & Mdl: Abdullapurmet, R.R. Dist-501505.



(Sponsored by: Brilliant Grammar School Educational Society)

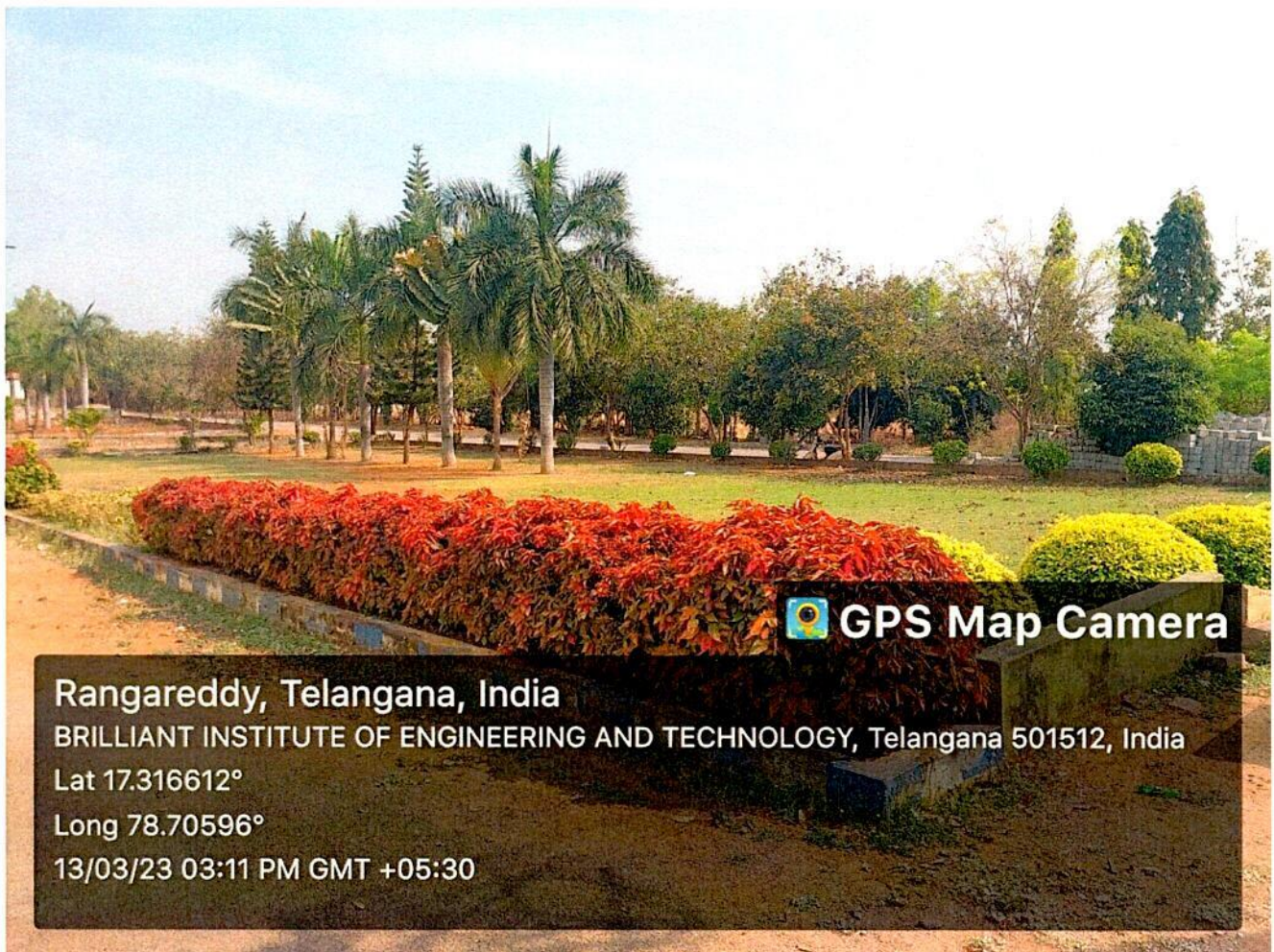
(Approved by AICTE, New Delhi, Affiliated to JNTU-Hyderabad)

Abdullapur(V), Abdullapurmet (M), R.R. Dist – 501505, Telangana, India

Website: www.b-iet.ac.in, e-mail: principal@b-iet.ac.in Contact No.: +919652929786

5. Landscaping with trees and plants

Landscaping in college can be a rewarding experience, whether you're involved in maintaining campus grounds, studying landscape architecture, or participating in gardening clubs. Regular up keep of lawns, gardens, and trees enhances the campus environment.



Birds view of Landscaping in the college Campus

7
PRINCIPAL
BRILLIANT INSTITUTE OF
ENGINEERING AND TECHNOLOGY
 Vei & Md: Abdullapurmet, R.R.Dist-501505.



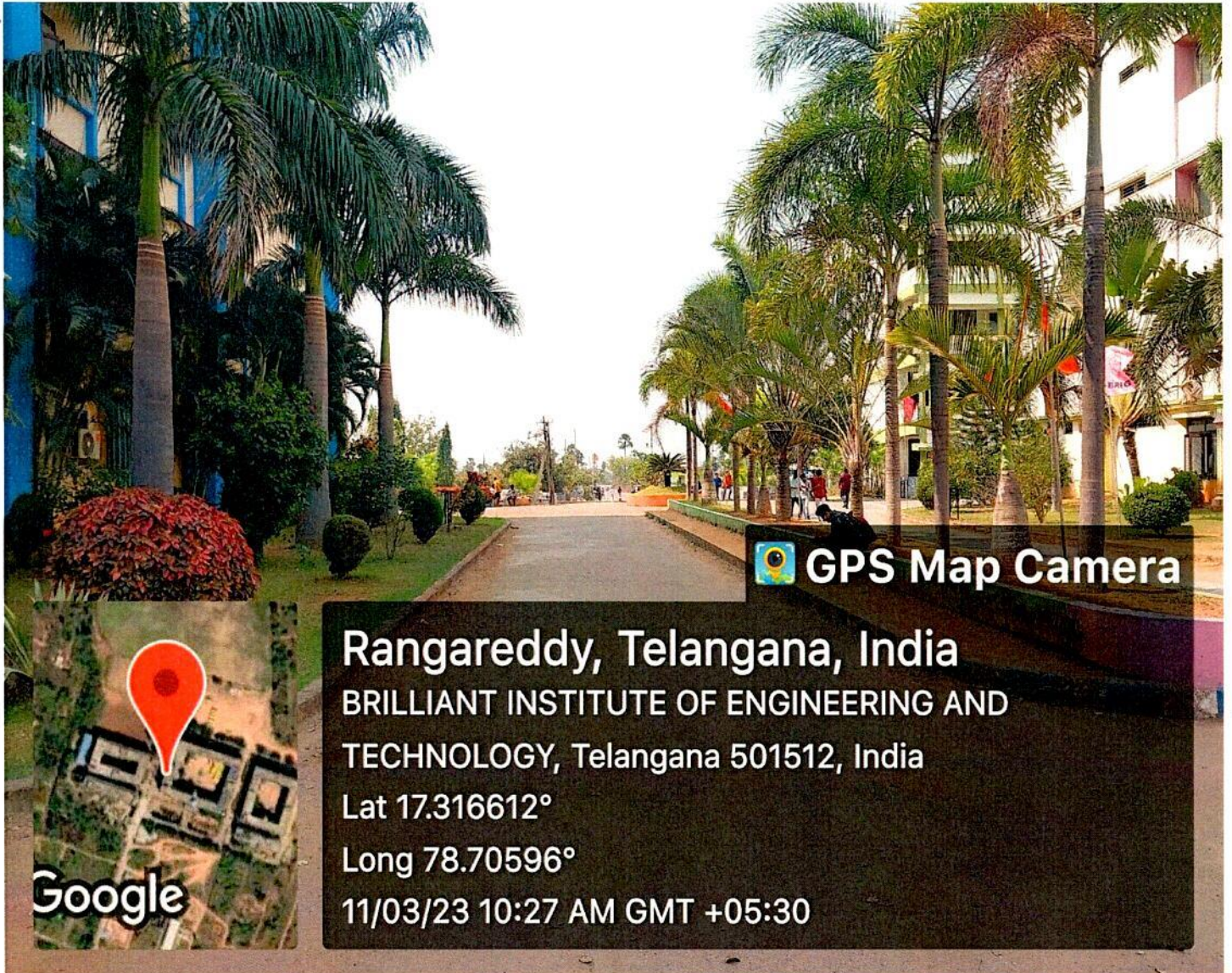
BRILLIANT INSTITUTE OF ENGINEERING & TECHNOLOGY

(Sponsored by: Brilliant Grammar School Educational Society)

(Approved by AICTE, New Delhi, Affiliated to JNTU-Hyderabad)

Abdullapur(V), Abdullapurmet (M),R.R. Dist – 501505, Telangana, India

Website: www.b-iet.ac.in, e-mail: principal@b-iet.ac.in Contact No.: +919652929786



 **GPS Map Camera**

Rangareddy, Telangana, India

**BRILLIANT INSTITUTE OF ENGINEERING AND
TECHNOLOGY, Telangana 501512, India**

Lat 17.316612°

Long 78.70596°

11/03/23 10:27 AM GMT +05:30

**PRINCIPAL
BRILLIANT INSTITUTE OF
ENGINEERING AND TECHNOLOGY
V. Ravindri Abdullapurmet, R.R. Dist-501505.**



BRILLIANT INSTITUTE OF ENGINEERING & TECHNOLOGY

(Sponsored by: Brilliant Grammar School Educational Society)

(Approved by AICTE, New Delhi, Affiliated to JNTU-Hyderabad)

Abdullapur(V), Abdullapurmet (M), R.R. Dist – 501505, Telangana, India

Website: www.b-iet.ac.in, e-mail: principal@b-iet.ac.in Contact No.: +919652929786



Lawn landscaping at BRIL.

PRINCIPAL
BRILLIANT INSTITUTE OF
ENGINEERING AND TECHNOLOGY
Vill & Md: Abdullapurmet, R.R. Dist-501505.